



**METRO
DE PANAMA**

User Guide

for use of Metro of Panama during

JMJ
PANAMÁ 2019





elmetrodepanama

www.elmetrodepanama.com

IIIMETRO CULTURA

Rate during WYD

 Use of **Line 2** will be **free**.
Users must have the card to validate the trip (at entrance and exit).

 The regular rate on **Line 1** will be **\$0.35** per trip.

Service will be **free** only on the following date:

From Saturday, January 26th, from **12:00 noon** until Sunday, January 27th at **6:00 p.m.**



APP AVAILABLE
METRO DE PANAMÁ OFICIAL



Available on the
App Store



GET IT ON
Google Play

Mobility Plan during WYD

Line 1: Always operational and with extended schedule.

Line 2: Starts operations from January 18th to 28th. It will offer partial service, enabling the following **5 stations**:

- **Corredor Sur**
- **Pedregal**
- **San Antonio**
- **Cincuentenario**
- **San Miguelito**

Service Hours

Line 1 and **Line 2**



From January, Tuesday 22nd to Friday 25th
5:00 a.m. to 2:00 a.m.



On Saturday 26th, service starts at **5:00 a.m.**
and ends on Sunday 27th at **12:00 midnight.**
(42 continuous hours of operation).



METRO
DE PANAMA

JMJ
PANAMÁ 2019

Stations close to the sites where the events will take place

Line **1** stations near Campo Santa María La Antigua (Cinta Costera)

 Cinco de Mayo

 Lotería

 Santo Tomás

 Iglesia del Carmen

Special schedule of Lotería station

← Exit only - **10:00 a.m. a 4:00 p.m.**

→ Entrance only - **7:00 p.m. a 2:00 a.m.**

Towards Parque de la Juventud (Parque Recreativo Omar)

L1 Fernández de Córdoba

L1 Vía Argentina

Line **2** stations near Campo San Juan Pablo II (Metro Park)

 Corredor Sur

 San Antonio

 Pedregal



METRO
DE PANAMA

JMJ
PANAMÁ 2019

Line 2 stations by community or zone

Corredor Sur:

- Don Bosco
- Las Mañanitas
- Tocumen

Pedregal:

- Las Acacias
- Pedregal
- Don Bosco

San Antonio:

- Cerro Viento
- Juan Díaz
- Brisas del Golf
- San Antonio

Cincuentenario:

- Villa Guadalupe
- Río Abajo
- Veranillo
- Las 500
- Villa Lucre
- San Cristóbal
- El Crisol

San Miguelito:

- Monte Oscuro
- Paraíso
- Pueblo Nuevo
- El Bosque

Operation of Line **1** Stations close to events taking place in Campo Santa María la Antigua (Cinta Costera)

January
22nd
to
25th

← Arrival at the events 10:00 a.m. to 4:00 p.m.

5 de Mayo

- Access 1: Ave. 3 de Noviembre/Policlínica Pediátrica CSS
- Access 2: Ave. 3 de Noviembre/Ave. Central
- Access 3: Este/Museo Afroantillano (*entrance only*)

Lotería

- Access 1: Cinta Costera
- Access 2: Piscina Adán Gordón

Santo Tomás

- Access 1: Hacia Calle 38/Hospital Santo Tomás
- Access 2: Hacia Calle 40/Ave. Cuba (*entrance only*)

Iglesia del Carmen

- Access 1: Calle 49 oeste/Vía Véneto
- Access 2: Calle Elvira Méndez
- Access 3: Ave. Federico Boyd (*entrance only*)
- Access 4: Ave. Manuel Espinosa/
Iglesia del Carmen (*entrance only*)

Note: Besides the mentioned schedule,
all accesses will be operating as usual.

Operation of Line **1** Stations close to events taking place in Campo Santa María la Antigua (Cinta Costera)

January
22nd
to
25th

 **Event exit**
7:00 p.m. to 2:00 a.m.

5 de Mayo

- Access 1: Ave. 3 de Noviembre/Policlínica Pediátrica CSS
- Access 2: Ave. 3 de Noviembre/Ave. Central
- Access 3: Este/Museo Afroantillano (*exit only*)

Lotería

- Access 1: Cinta Costera
- Access 2: Piscina Adán Gordón

Santo Tomás

- Access 1: Hacia Calle 38/Hospital Santo Tomás
- Access 2: Hacia Calle 40/Ave. Cuba (*exit only*)

Iglesia del Carmen

- Access 1: Calle 49 oeste/Vía Véneto
- Access 2: Calle Elvira Méndez
- Access 3: Ave. Federico Boyd (*exit only*)
- Access 4: Ave. Manuel Espinosa/
Iglesia del Carmen (*exit only*)

Note: Besides the mentioned schedule,
all accesses will be operating as usual.

Remember:



Always carry your card. It is necessary to validate your trip when you use the Metro of Panama.



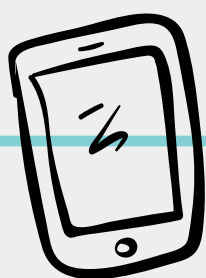
Line 2 will be free, but you must **keep your card with balance** to be able to use Line 1.



User rules within facilities: **no eating, no drinking and no smoking.**



Observe safety rules and follow instructions of identified station staff.



911 Medical Emergencies

311 Centro de Atención Ciudadana
(Citizen Care Center)



METRO
DE PANAMA

JMJ
PANAMÁ 2019